

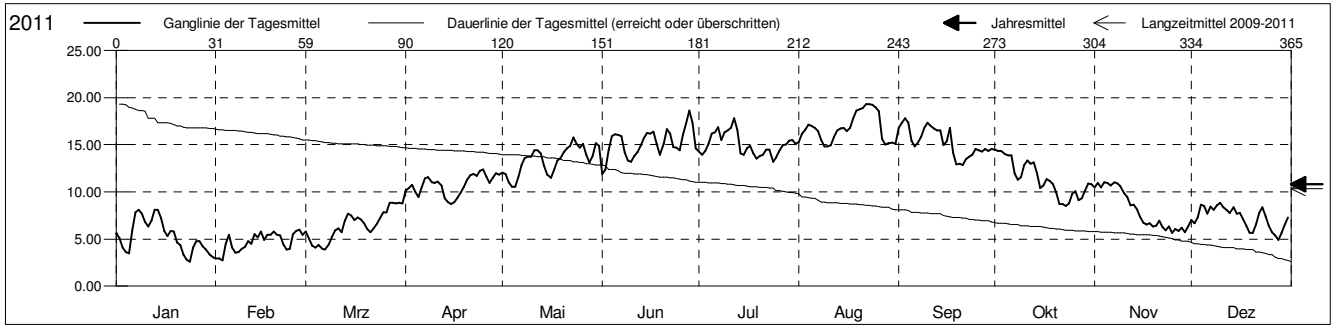
# Wassertemperatur Oberflächengewässer (°C)



Wahlenbach, unterhalb Wahlen

Amt für Umweltschutz und Energie  
Kanton Basel-Landschaft

2011	Januar	Februar	März	April	Mai	Juni	Juli	August	September	Oktober	November	Dezember	
1	5.6	2.9	5.8	10.2	12.1	11.9 -	14.3	15.3	16.8	14.5 +	10.4	7.0	1
2	5.1	2.9	5.0	10.4	11.9	12.4	14.0	16.2	17.3	14.4	10.9	6.7	2
3	4.1	2.7 -	4.3	10.8	11.0	14.4	14.4	16.6	17.8 +	14.3	10.5	7.3	3
4	3.6	4.5	4.1	10.0	10.6	15.9	15.1	17.1	17.3	14.0	11.0 +	8.6	4
5	3.5	5.4	4.3	9.4	10.5 -	16.1	16.2	17.0	15.4	13.9	11.0 +	8.5	5
6	5.9	4.1	4.0	10.5	11.6	16.0	16.3	16.8	14.8	13.9	10.7	7.7	6
7	7.8	3.5	3.9 -	11.4	12.8	15.9	16.9	16.5	15.2	12.0	11.0 +	8.4	7
8	8.1 +	3.6	4.4	11.5	13.6	14.2	15.5	15.5	15.9	11.3	10.9	8.1	8
9	7.7	4.0	5.2	11.0	13.7	13.4	16.3	14.8 -	16.8	11.6	10.6	8.5	9
10	6.8	4.2	5.9	10.9	13.8	13.2	16.5	14.8 -	17.3	12.8	9.9	8.8 +	10
11	6.3	4.8	6.1	11.1	14.4	13.8	16.8	14.9	17.0	13.3	9.5	8.4	11
12	6.9	4.5	5.7	10.7	14.4	14.2	17.8 +	15.9	16.7	13.0	8.6	8.1	12
13	8.1 +	5.5	6.9	9.3	14.1	14.9	16.6	16.5	16.6	13.1	8.6	7.7	13
14	8.1 +	5.2	7.7	8.9	12.8	15.7	14.1	16.7	16.5	12.0	8.2	8.4	14
15	7.2	5.8	7.5	8.7 -	11.9	16.3	13.9	16.8	15.0	10.4	7.4	7.7	15
16	5.9	4.9	7.0	8.9	11.5	16.2	14.6	16.4	15.4	10.7	6.7	7.7	16
17	5.3	5.4	7.3	9.4	12.3	16.3	14.9	16.8	16.8	11.4	6.5	7.1	17
18	5.9	5.4	7.1	9.9	13.3	15.1	14.1	17.8	14.1	11.1	6.7	6.4	18
19	5.8	5.8	6.7	10.6	13.6	13.9	13.5	18.6	12.9	10.8	6.3	5.7	19
20	4.6	5.5	6.0	11.3	14.2	15.1	13.8	18.8	13.0	9.9	6.4	5.6	20
21	4.4	5.4	5.7	11.8	14.6	16.6	13.9	18.9	12.8 -	8.7	6.9	6.6	21
22	3.3	4.4	6.1	11.9	14.9	16.2	14.5	19.3 +	13.4	8.7	6.3	7.7	22
23	2.8	3.9	6.6	11.7	15.8 +	14.7	14.5	19.3 +	13.7	8.5 -	5.9	8.4	23
24	2.6 -	4.0	7.2	12.2	15.1	14.7	13.2 -	19.2	14.0	8.8	6.3	7.4	24
25	4.1	5.5	7.8	12.4 +	14.7	14.4	13.6	18.9	14.5	9.8	5.6 -	6.4	25
26	4.8	5.9	7.8	11.6	15.1	16.0	14.3	18.5	14.4	10.1	6.1	5.7	26
27	4.8	6.0 +	8.8 +	11.0	13.9	17.3	15.0	15.7	14.3	9.1	5.8	5.4	27
28	4.2	5.5	8.8 +	11.5	13.1	18.6 +	15.0	15.1	14.5	9.3	6.2	4.9 -	28
29	3.9	8.8 +	12.0	13.8	17.4	15.4	15.4	15.1	14.3	10.1	5.8	5.7	29
30	3.3	8.8 +	11.8	15.1	14.6	15.5	15.5	15.2	14.6	10.9	6.3	6.5	30
31	3.0	8.7	14.9	15.1	15.1	15.1	15.1	15.1	15.1	10.8	7.3	7.3	31
Monatsmittel	5.3	4.7 -	6.5	10.8	13.4	15.2	15.0	16.8 +	15.3	11.4	8.1	7.2	
Maximum	8.7	7.4 -	11.7	16.1	18.4	21.2	21.8 +	21.3	20.1	16.1	12.2	9.7	
Datum	08.01	13.02	29.03	25.04	30.05	28.06	12.07	22.08	03.09	01.10	02.11	05.12	
Minimum	1.6	1.5 -	2.3	6.0	7.6	11.3	12.1	12.7 +	11.5	7.7	4.8	4.5	
Datum	24.01	03.02	08.03	16.04	05.05	10.06	03.07	11.08	21.09	23.10	25.11	28.12	
Amplitude	7.1	5.9	9.4	10.1	10.8	9.9	9.7	8.6	8.6	8.4	7.4	5.3	
Jahr 2011	Mittel	10.8 °C		Maximum	21.8 (12.Jul)			Minimum	1.5 (03.Feb)		Amplitude	20.3 °C	



Periode 2009 - 2011													
Monatsmittel	4.2 -	4.4	6.0	10.0	12.3	14.5	15.9	16.4 +	14.4	10.9	8.4	6.2	
Maximum	8.7	7.8 -	11.7	17.8	19.4	21.2	23.2 +	21.3	20.1	16.1	12.5	9.7	
Jahr	2011	2010	2011	2010	2009	2011	2010	2011	2011	2011	2010	2011	
Minimum	0.2 -	0.5	0.7	4.9	7.6	10.5	12.1	12.3 +	9.7	6.4	2.5	0.2 -	
Jahr	2009	2010	2010	2010	2011	2010	2011	2010	2010	2010	2010	2009	
Amplitude	7.1 -	7.4	10.7	12.8 +	11.7	9.9	9.8	8.8	8.6	9.6	10.0	9.1	
Jahr	2011	2010	2010	2010	2009	2011	2010	2009	2011	2009	2010	2009	
Periode	Mittel	10.3 °C		Maximum	23.2 (12.Jul 2010)			Minimum	0.2 (12.Jan 2009)		Amplitude	23.0 °C	

Darstellung der letzten 3 Jahre

