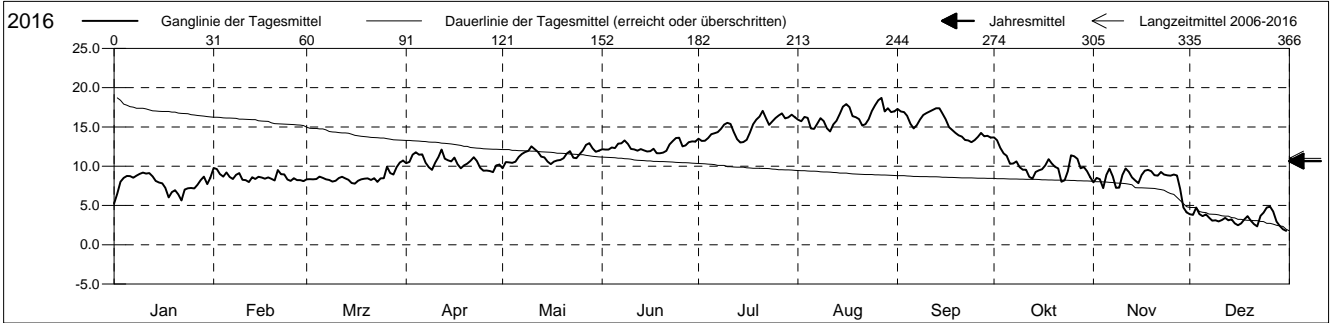


**Wassertemperatur Oberflächengewässer (°C)**

Orisbach, oberhalb Liestal

**Amt für Umweltschutz und Energie  
Kanton Basel-Landschaft**

2016	Januar	Februar	März	April	Mai	Juni	Juli	August	September	Oktober	November	Dezember	
1	5.2 -	9.8 +	8.3	10.4	9.7 -	12.2	13.5	15.9	17.3	13.7 +	7.9	3.9	1
2	6.5	9.6	8.3	10.5	10.5	12.1	13.2	15.7	17.0	13.3	8.5	3.8	2
3	8.0	9.0	8.3	11.5	10.5	12.1	13.2	16.3	16.9	12.4	8.3	4.7	3
4	8.5	8.7	8.4	11.8	10.4	12.4	13.6	16.1	16.4	11.6	7.2	3.9	4
5	8.8	9.2	8.7	11.5	10.6	12.3	14.1	14.8	15.4	11.3	8.9	3.6	5
6	8.7	8.6	8.5	11.5	11.2	12.9	14.2	14.8	14.8	10.3	9.7 +	3.9	6
7	8.5	8.4	8.3	10.4	11.5	12.9	14.3	15.4	15.2	10.3	8.7	3.5	7
8	8.8	8.9	8.2	9.9	11.8	13.3	14.7	16.1	16.0	10.6	7.2	3.1	8
9	9.0	9.1	8.0	9.5	12.0	12.8	15.3	15.7	16.5	9.9	7.3	3.1	9
10	9.2 +	8.3	8.1	10.4	12.5	12.2	15.5	14.8	16.8	9.6	8.9	3.0	10
11	9.1	8.2	8.5	11.2	12.2	12.1	15.4	14.4 -	17.0	9.5	9.7 +	3.1	11
12	9.1	8.0 -	8.7	12.1 +	11.8	12.0	14.4	15.3	17.2	8.7	9.3	3.4	12
13	8.7	8.6	8.4	11.0	11.2	12.2	13.5	15.8	17.4 +	8.4	8.6	3.1	13
14	8.1	8.4	8.3	10.8	11.1	12.0	13.0 -	16.7	17.4 +	9.3	8.2	3.2	14
15	7.9	8.7	7.8 -	10.6	10.6	11.9	13.1	17.6	16.7	9.5	7.8	2.7	15
16	7.8	8.6	7.8 -	11.1	10.3	11.9	13.4	17.9	16.0	9.6	8.9	2.5	16
17	7.2	8.4	8.2	10.2	10.6	12.2	14.3	17.5	15.0	10.1	9.4	2.7	17
18	6.0	8.6	8.3	9.7	10.7	11.6 -	15.3	16.4	14.6	10.9	9.5	3.2	18
19	6.7	8.4	8.4	10.1	10.8	11.6 -	15.9	16.2	14.2	10.4	9.4	3.6	19
20	6.9	8.2	8.4	10.3	11.0	11.7	16.3	16.0	13.9	9.9	8.9	3.1	20
21	6.4	9.5	8.3	10.7	11.6	12.0	17.0 +	15.2	13.8	9.7	8.8	2.6	21
22	5.6	9.0	8.5	11.1	11.9	12.8	16.1	15.4	13.4	8.0 -	9.3	2.3	22
23	7.0	9.0	8.0	10.7	11.1	13.2	15.2	16.0	13.3	8.2	8.9	3.7	23
24	7.2	8.3	8.5	9.8	11.0	13.6 +	15.7	17.0	13.1 -	9.3	8.8	4.1	24
25	7.2	8.1	8.5	9.4	11.5	13.6 +	16.1	17.8	13.3	11.4	8.8	4.7	25
26	7.2	8.5	9.9	9.4	12.0	12.5	16.5	18.4	13.7	11.3	8.9	4.8 +	26
27	7.6	8.2	9.1	9.4	12.7	12.6	16.7	18.7 +	14.2	10.9	8.8	4.2	27
28	8.2	8.2	8.9	9.3 -	12.9 +	13.1	16.1	17.0	13.8	9.7	7.1	2.9	28
29	8.7	8.1	9.9	10.1	12.3	13.2	16.2	17.4	13.9	9.9	4.8	2.4	29
30	7.7		10.5	10.2	11.8	13.1	16.6	16.9	13.6	9.4	4.1 -	2.0	30
31	8.5		10.7 +		12.0		16.2	17.0		8.6		1.8 -	31
Monatsmittel	7.8	8.6	8.6	10.5	11.4	12.5	15.0	16.3 +	15.3	10.2	8.4	3.3 -	
Maximum	9.6	10.6	12.5	14.2	14.3	16.1	18.9	19.9 +	18.4	14.1	10.4	5.5 -	
Datum	31.01	21.02	31.03	12.04	27.05	25.06	22.07	27.08	14.09	01.10	18.11	26.12	
Minimum	4.8	7.4	6.7	8.0	9.0	10.9	11.8	13.2 +	11.9	7.3	3.6	1.2 -	
Datum	01.01	14.02	15.03	28.04	05.05	20.06	16.07	11.08	24.09	22.10	30.11	31.12	
Amplitude	4.8	3.2	5.8	6.2	5.3	5.2	7.0	6.7	6.5	6.8	6.8	4.2	
Jahr 2016	Mittel	10.6 °C		Maximum	19.9 (27.Aug)		Minimum	1.2 (31.Dez)		Amplitude	18.7 °C		



Periode	2006 - 2016												
Monatsmittel	7.5	7.2	8.5	10.7	12.2	14.1	15.5	15.6 +	13.8	10.9	8.9	7.0 -	
Maximum	10.6	10.6	12.8	15.9	18.9	20.9	23.1 +	21.8	19.1	14.8	12.0	10.4 -	
Jahr	2015	2016	2012	2010	2009	2011	2015	2015	2015	2011	2013	2014	
Minimum	3.4	2.2	4.7	7.1	8.6	9.5	11.6 +	11.6 +	9.7	6.5	3.6	1.2 -	
Jahr	2009	2012	2010	2013	2012	2013	2013	2014	2010	2010	2016	2016	
Amplitude	5.5 -	7.5	7.5	8.5	9.2	8.5	9.3 +	8.0	8.8	7.8	7.1	6.9	
Jahr	2015	2012	2010	2010	2009	2011	2015	2011	2015	2009	2015	2009	
Periode	Mittel	11.0 °C		Maximum	23.1 (24.Jul 2015)		Minimum	1.2 (31.Dez 2016)		Amplitude	21.8 °C		

Darstellung der letzten 11 Jahre

