

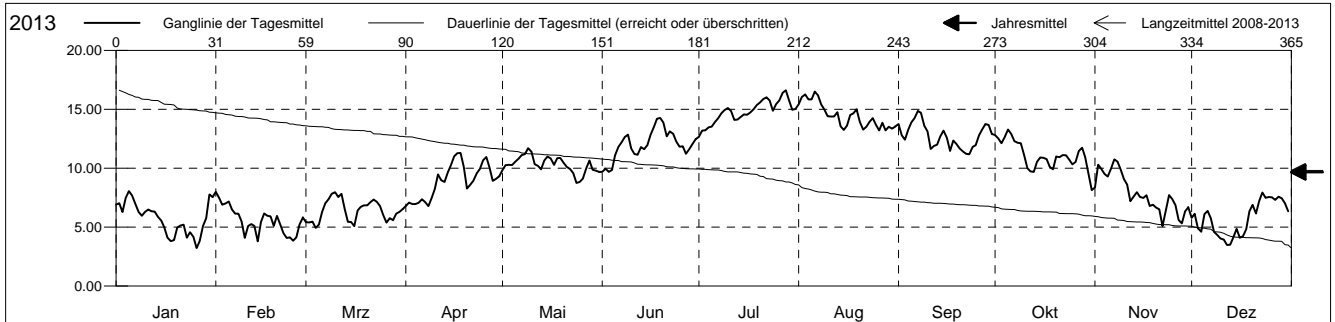
Wassertemperatur Oberflächengewässer (°C)



Lützel, auf Höhe Röschenz

Amt für Umweltschutz und Energie
Kanton Basel-Landschaft

2013	Januar	Februar	März	April	Mai	Juni	Juli	August	September	Oktober	November	Dezember	
1	6.9	8.0 +	5.4	6.8 -	9.8	9.7 -	12.7 -	15.4	13.7	12.8	8.4	5.8	1
2	7.0	7.5	5.4	7.1	10.3	10.0	13.2	16.0	12.8	12.5	10.3	6.1	2
3	6.3	6.9	5.5	7.0	10.3	9.7 -	13.2	16.3	12.4	12.1	9.9	4.9	3
4	7.5	7.0	4.9 -	7.0	10.3	9.8	13.5	15.8	13.2	12.7	9.5	4.6	4
5	8.1 +	7.2	5.2	7.1	10.6	11.1	13.5	15.8	13.9	13.3 +	9.3	6.1	5
6	7.7	6.5	6.3	7.4	10.8	11.8	13.9	16.5 +	14.3	12.9	9.9	6.4	6
7	7.0	6.1	7.0	7.1	11.1	12.2	14.2	16.2	14.9 +	12.3	10.7 +	5.7	7
8	6.3	6.1	7.4	6.8 -	11.2	12.6	14.7	15.4	14.7	12.2	10.6	4.6	8
9	6.0	5.5	7.8	7.5	11.7 +	12.9	14.9	15.0	13.6	12.1	9.9	4.3	9
10	6.3	4.1	8.0 +	8.2	11.4	11.7	15.1	14.4	13.1	11.1	9.1	4.0	10
11	6.5	5.1	7.6	9.5	10.3	11.2	14.9	14.4	11.6	10.0	8.6	3.9	11
12	6.3	5.3	7.8	9.0	10.2	11.1	14.1	14.4	11.9	9.7	7.2	3.5 -	12
13	6.3	5.1	6.6	8.8	9.9	11.8	14.1	14.8	12.0	9.7	7.6	3.5 -	13
14	5.9	3.8 -	5.5	9.6	10.7	11.6	14.4	13.6	12.7	10.5	8.0	4.1	14
15	5.6	5.4	5.4	10.2	11.0	12.0	14.6	13.3	13.2	10.9	7.6	4.9	15
16	5.0	6.2	5.1	11.0	10.8	12.8	14.5	13.6	12.6	10.9	7.5	4.1	16
17	4.1	6.0	6.4	11.3 +	10.3	13.5	14.7	14.5	11.5	10.8	7.7	4.2	17
18	3.8	5.9	6.7	11.3 +	10.9	14.2	15.0	14.7	12.3	10.1	6.8	4.8	18
19	3.9	5.1	6.9	10.1	10.9	14.3 +	15.4	15.0	12.0	9.9	6.9	6.3	19
20	5.0	5.9	6.8	8.3	10.5	13.9	15.6	13.9	11.7	11.0	6.7	6.9	20
21	5.1	5.2	7.1	8.6	10.1	12.7	15.9	13.3	11.4	10.9	6.5	6.2	21
22	5.2	4.5	7.3	8.9	9.9	13.1	16.0	13.5	11.2 -	11.1	5.1 -	7.2	22
23	4.1	4.1	7.1	9.6	9.6	12.9	15.7	13.9	11.2 -	11.1	6.4	7.9 +	23
24	4.6	4.1	6.8	9.9	8.7 -	12.3	14.9	14.3	11.8	10.7	7.7	7.5	24
25	4.2	3.8 -	6.0	10.7	8.8	11.8	15.4	13.7	12.0	10.3	7.4	7.6	25
26	3.2 -	4.1	5.4	11.0	9.1	11.9	15.7	13.2 -	12.8	10.5	6.9	7.5	26
27	3.8	5.2	5.8	10.0	10.0	11.2	16.4	13.9	13.3	11.4	5.6	7.3	27
28	5.1	5.8	5.6	8.9	10.6	11.6	16.6 +	13.2 -	13.7	11.7	5.3	7.6	28
29	5.8	6.1	9.1	9.9	9.9	12.0	15.8	13.5	13.7	10.9	6.3	7.4	29
30	7.8	6.3	9.3	9.8	9.8	12.5	15.0	13.4	12.9	9.5	6.7	7.0	30
31	7.5	6.5	6.5	9.7	9.7	15.0	15.0	13.5	13.5	8.1 -	6.3	6.3	31
Monatsmittel	5.7	5.6 -	6.4	8.9	10.3	12.0	14.8 +	14.5	12.7	11.1	7.9	5.8	
Maximum	8.5	8.3 -	8.6	13.0	12.6	15.4	17.7 +	17.3	15.5	13.7	11.2	8.6	
Datum	30.01	01.02	10.03	17.04	08.05	18.06	27.07	06.08	07.09	05.10	07.11	23.12	
Minimum	2.5 -	2.6	3.9	5.7	8.2	8.7	11.4	12.2 +	10.3	7.5	4.4	2.8	
Datum	26.01	14.02	16.03	04.04	25.05	04.06	01.07	15.08	23.09	31.10	22.11	12.12	
Amplitude	6.0	5.7	4.8	7.3	4.5	6.7	6.3	5.1	5.2	6.1	6.8	5.7	
Jahr 2013	Mittel	9.7 °C		Maximum	17.7 (27.Jul)		Minimum	2.5 (26.Jan)		Amplitude	15.1 °C		



Periode	2008 - 2013												
Monatsmittel	5.3	4.9 -	6.8	9.6	11.5	13.2	14.6	14.7 +	12.6	10.0	7.8	6.2	
Maximum	8.9	8.6 -	10.9	14.4	16.8	17.7	18.1 +	18.1 +	17.5	14.6	11.2	9.1	
Jahr	2012	2010	2012	2010	2009	2012	2010	2011	2011	2009	2010	2012	
Minimum	0.6	0.1	2.1	5.7	7.6	8.7	11.4 +	11.4 +	9.0	5.2	2.0	-0.1 -	
Jahr	2009	2012	2010	2013	2012	2013	2013	2009	2010	2009	2010	2009	
Amplitude	6.5	7.7	8.2	8.5	8.4	7.3	6.3 -	6.5	7.2	9.4 +	9.3	8.9	
Jahr	2011	2012	2010	2010	2009	2012	2013	2011	2011	2009	2010	2009	
Periode	Mittel	9.8 °C		Maximum	18.1 (23.Aug 2011)		Minimum	-0.1 (20.Dez 2009)		Amplitude	18.2 °C		

Darstellung der letzten 6 Jahre

