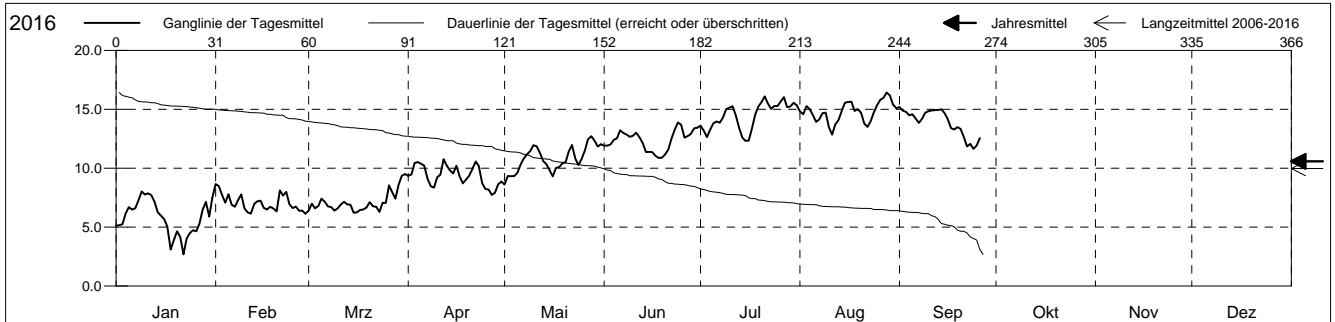


Wassertemperatur Oberflächengewässer (°C)

Lützel, auf Höhe Röschenz

Amt für Umweltschutz und Energie
Kanton Basel-Landschaft

2016	Januar	Februar	März	April	Mai	Juni	Juli	August	September	Oktober	November	Dezember	
1	5.1	8.7 +	6.4	9.3	8.6 -	11.9	13.6	14.8	15.2 +				1
2	5.2	8.5	7.0	9.5	9.3	11.9	13.2	14.6	14.9				2
3	5.2	7.8	6.6	10.5	9.3	12.0	12.6	15.3	14.8				3
4	6.2	7.1	6.8	10.5	9.3	12.4	13.3	15.0	14.5				4
5	6.7	7.8	7.4	10.4	9.6	12.5	13.8	14.5	14.6				5
6	6.5	6.9	7.1	10.2	10.3	13.2	14.0	13.9	14.2				6
7	6.6	6.7	6.8	9.1	10.8	13.0	13.9	14.1	13.8				7
8	7.3	7.3	6.7	8.5	11.2	12.8	14.3	14.7	14.2				8
9	8.0 +	7.8	6.4	8.4	11.5	12.7	15.0	14.7	14.7				9
10	7.8	6.6	6.6	9.2	12.0	12.8	15.1	13.5	14.8				10
11	7.9	6.3	6.9	9.5	11.9	13.0	15.3	12.8 -	14.9				11
12	7.7	6.1 -	7.1	10.8 +	11.3	12.6	14.5	13.7	14.9				12
13	7.1	7.0	6.9	10.2	10.6	12.1	13.4	14.1	14.9				13
14	6.3	7.2	6.9	9.8	10.3	11.4	12.6	14.9	15.0	Logger wegen Baustelle verschwunden	Logger wegen Baustelle verschwunden	Logger wegen Baustelle verschwunden	14
15	6.0	7.2	6.2 -	9.5	9.8	11.4	12.3 -	15.6	14.7				15
16	5.7	6.6	6.3	10.2	9.3	11.4	12.3 -	15.6	14.2				16
17	5.0	6.5	6.4	9.3	10.0	11.0	13.4	15.6	13.4				17
18	3.1	6.7	6.5	8.7	10.1	10.9 -	14.5	14.9	13.3				18
19	3.9	6.6	6.7	9.0	10.4	10.9 -	15.2	15.0	13.5				19
20	4.6	6.3	7.1	9.4	10.5	11.2	15.6	14.7	13.3				20
21	4.2	8.1	6.8	9.9	11.4	11.6	16.1 +	13.8	12.6				21
22	2.7 -	7.7	6.7	10.6	12.0	12.5	15.5	13.5	11.9				22
23	4.0	8.0	6.3	10.2	10.8	13.3	15.0	14.0	12.1				23
24	4.5	6.9	7.1	8.7	10.3	13.9 +	15.3	14.8	11.6				24
25	4.7	6.6	7.0	8.2	10.8	13.7	15.3	15.3	11.9				25
26	4.6	6.7	8.5	8.2	11.5	12.6	15.7	15.8	12.6				26
27	5.3	6.4	8.0	7.7 -	12.5	12.7	16.0	16.0					27
28	6.5	6.4	7.4	7.9	12.7 +	12.9	15.2	16.4 +	16.2	Logger wegen Baustelle verschwunden			28
29	7.1	6.1 -	8.6	8.6	12.3	13.4	15.2	16.2	15.4				29
30	5.9		9.4	8.9	11.9	13.4	15.6	15.4	15.4				30
31	7.5		9.5 +		12.0		15.3	15.1					31
Monatsmittel	5.8 -	7.1	7.1	9.4	10.8	12.4	14.5	14.8 +	13.9				
Maximum	8.5 -	8.9	10.9	12.4	14.0	15.1	17.0	17.3 +	15.9				
Datum	31.01	01.02	31.03	12.04	27.05	24.06	20.07	28.08	01.09				
Minimum	2.0 -	5.5	5.1	6.6	7.9	10.5	11.0	11.8 +	10.8				
Datum	22.01	20.02	18.03	28.04	05.05	20.06	16.07	11.08	24.09				
Amplitude	6.5	3.4	5.8	5.8	6.1	4.6	6.0	5.5	5.1				
Jahr 2016	Mittel	10.6 °C		Maximum	17.3 (28.Aug)			Minimum	2.0 (22.Jan)		Amplitude	15.3 °C	



Periode	2006 - 2016												
Monatsmittel	5.7	5.4 -	7.0	9.6	11.4	13.3	14.6 +	14.6 +	12.8	10.2	7.9	6.1	
Maximum	9.5	8.9 -	10.9	14.4	16.8	18.1	19.4 +	18.4	17.5	14.6	11.7	9.1	
Jahr	2015	2016	2012	2010	2009	2014	2015	2015	2011	2009	2015	2012	
Minimum	0.6	0.1	2.1	5.7	7.6	8.7	11.0 +	11.0 +	9.0	5.2	2.0	-0.1 -	
Jahr	2009	2012	2010	2013	2012	2013	2016	2014	2010	2009	2010	2009	
Amplitude	7.2	7.7	8.2	8.5	8.4	7.3	7.0	6.5 -	7.2	9.4 +	9.3	8.9	
Jahr	2015	2012	2010	2010	2009	2012	2015	2011	2011	2009	2010	2009	
Periode	Mittel	10.0 °C		Maximum	19.4 (07.Jul 2015)			Minimum	-0.1 (20.Dez 2009)		Amplitude	19.5 °C	

Darstellung der letzten 11 Jahre

