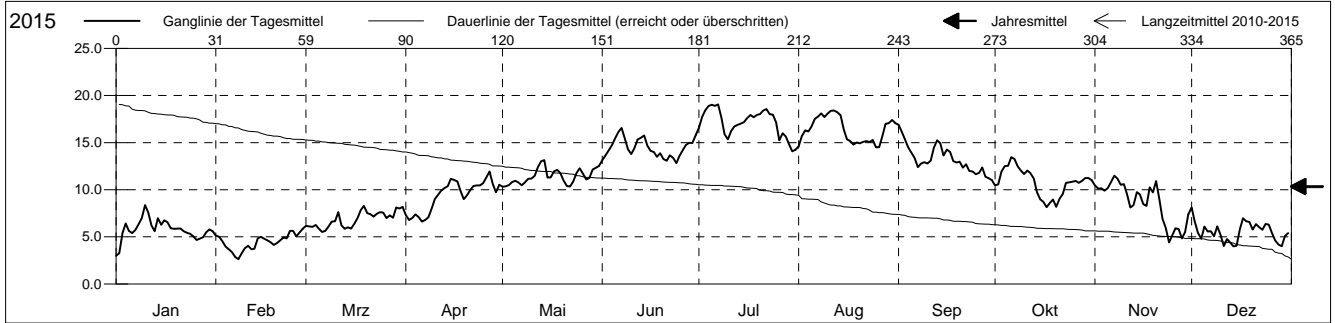


Wassertemperatur Oberflächengewässer (°C)

Eibach, in Gelterkinden

**Amt für Umweltschutz und Energie
Kanton Basel-Landschaft**

2015	Januar	Februar	März	April	Mai	Juni	Juli	August	September	Oktober	November	Dezember	
1	3.0 -	5.1	6.2	7.3	10.3 -	13.1	16.6	14.6	16.9 +	10.5	10.5	8.1 +	1
2	3.3	5.0	6.1	6.8	10.4	13.6	17.7	15.7	16.2	10.6	10.1	6.7	2
3	5.4	4.6	6.1	7.0	10.5	14.2	18.4	16.3	15.4	11.9	10.2	5.4	3
4	6.4	4.0	6.3	7.4	10.8	14.7	18.9	16.2	14.5	12.5	9.9	4.8	4
5	5.6	3.7	5.8	7.1	11.0	15.4	19.0	16.7	14.0	12.5	10.2	6.1	5
6	5.4	3.4	5.5 -	6.6 -	10.8	16.1	18.9	17.5	13.4	13.4 +	10.8	5.6	6
7	5.7	2.9	5.6	6.8	10.5	16.5 +	19.1 +	17.8	12.4	13.3	11.5 +	5.6	7
8	6.3	2.6 -	6.1	7.1	10.8	15.4	17.6	18.1	12.8	12.5	11.2	5.1	8
9	7.0	3.2	6.6	8.0	11.1	14.3	15.9	17.7	12.9	12.0	10.5	6.1	9
10	8.4 +	3.8	6.7	9.0	11.2	13.8	15.4	18.1	12.8	11.7	10.6	5.3	10
11	7.6	4.1	7.6	9.5	11.5	14.4	16.2	18.4 +	13.1	12.0	9.5	4.0 -	11
12	6.2	3.7	6.2	9.9	12.4	15.3	16.7	18.4 +	14.5	11.8	8.1	4.8	12
13	5.6	3.7	5.9	10.2	13.0	15.5	16.9	18.2	15.3	11.2	8.4	4.4	13
14	7.0	4.8	6.0	10.4	13.1 +	15.8	17.0	17.9	14.9	9.7	9.8	4.0 -	14
15	6.3	5.0	5.9	11.2	11.3	14.7	17.2	16.4	13.6	9.0	9.5	4.1	15
16	6.7	4.8	6.4	11.0	11.3	14.1	17.6	15.4	14.3	8.7	8.5	5.8	16
17	6.6	4.6	7.0	10.9	11.9	14.0	17.9	15.2	14.0	8.2 -	8.3	7.0	17
18	5.9	4.4	7.8	9.9	12.1	13.5	17.7	14.8	13.1	8.6	10.2	6.6	18
19	5.9	4.2	8.3 +	9.0	11.8	13.9	17.9	15.0	12.9	9.0	9.7	6.6	19
20	5.9	4.3	7.5	9.4	11.0	13.3	18.0	14.9	13.0	8.2 -	10.9	5.8	20
21	5.9	4.6	7.4	10.0	10.4	13.1	18.4	15.1	12.4	9.0	9.0	6.4	21
22	5.6	4.9	7.1	10.4	10.3 -	13.7	18.6	15.2	12.7	9.6	6.9	6.0	22
23	5.4	4.8	7.5	10.5	10.9	13.4	18.0	15.1	12.0	10.7	6.0	5.8	23
24	5.3	5.6	7.6	10.5	11.8	12.8 -	18.0	15.3	11.9	10.8	4.4 -	6.4	24
25	5.0	5.6	7.6	10.7	12.3	13.6	17.2	14.5 -	11.6	10.9	5.2	6.3	25
26	4.7	5.0	7.0	11.3	11.7	14.2	15.3	14.5 -	11.8	10.9	5.9	5.4	26
27	4.8	5.5	7.3	11.9 +	11.1	14.8	16.0	15.7	12.4	10.7	5.8	4.6	27
28	5.0	5.9 +	7.0	10.6	11.3	15.0	15.6	17.0	11.4	11.0	4.8	4.2	28
29	5.5		8.1	9.7	12.1	15.0	14.8	17.1	11.2	11.2	5.5	4.0 -	29
30	5.8		8.0	10.5	12.3	15.8	14.1 -	17.4	11.0 -	11.2	7.4	5.1	30
31	5.6		8.2		12.5		14.2	17.1		11.0		5.4	31
Monatsmittel	5.8	4.4 -	6.9	9.3	11.4	14.4	17.1 +	16.4	13.3	10.8	8.6	5.5	
Maximum	8.9	6.5 -	9.2	13.4	14.0	17.3	20.9 +	20.1	18.4	14.6	12.1	8.5	
Datum	10.01	28.02	18.03	15.04	13.05	07.06	07.07	12.08	01.09	06.10	07.11	01.12	
Minimum	2.5	1.8 -	4.6	5.5	9.4	11.8	12.4	12.8 +	10.2	7.1	3.7	3.1	
Datum	01.01	08.02	07.03	08.04	22.05	24.06	30.07	26.08	30.09	20.10	24.11	29.12	
Amplitude	6.4	4.7	4.6	7.8	4.5	5.5	8.5	7.2	8.2	7.5	8.3	5.5	
Jahr 2015	Mittel	10.4 °C		Maximum	20.9 (07.Jul)		Minimum	1.8 (08.Feb)		Amplitude	19.0 °C		



Periode	2010 - 2015												
Monatsmittel	5.5	4.6 -	6.7	9.7	11.5	14.0	15.6 +	15.6 +	13.6	11.1	8.5	6.0	
Maximum	8.9	8.7 -	12.1	16.5	16.8	19.5	20.9 +	20.1	18.8	15.7	12.5	9.3	
Jahr	2011	2010	2014	2010	2011	2011	2015	2015	2011	2011	2010	2012	
Minimum	1.7	-0.1 -	0.5	4.8	7.1	8.9	11.7	12.1 +	8.9	5.3	1.8	0.9	
Jahr	2010	2012	2010	2013	2012	2013	2011	2011	2010	2010	2010	2010	
Amplitude	7.1 -	8.4	11.0	11.5 +	9.2	8.4	8.5	7.7	8.2	9.5	10.7	8.1	
Jahr	2011	2012	2010	2010	2011	2011	2015	2011	2015	2011	2010	2010	
Periode	Mittel	10.2 °C		Maximum	20.9 (07.Jul 2015)		Minimum	-0.1 (12.Feb 2012)		Amplitude	21.0 °C		

Darstellung der letzten 6 Jahre

