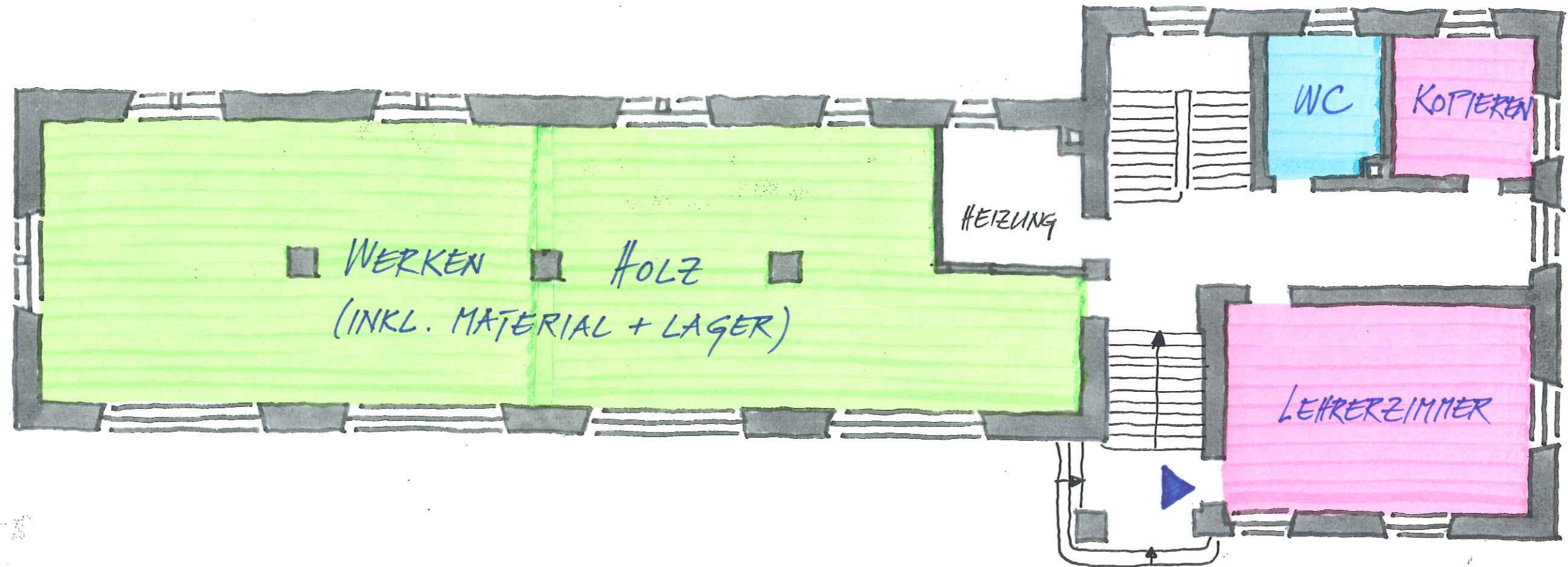


# RAUMKONZEPT SCHULHAUS / REVUE THOMMEN

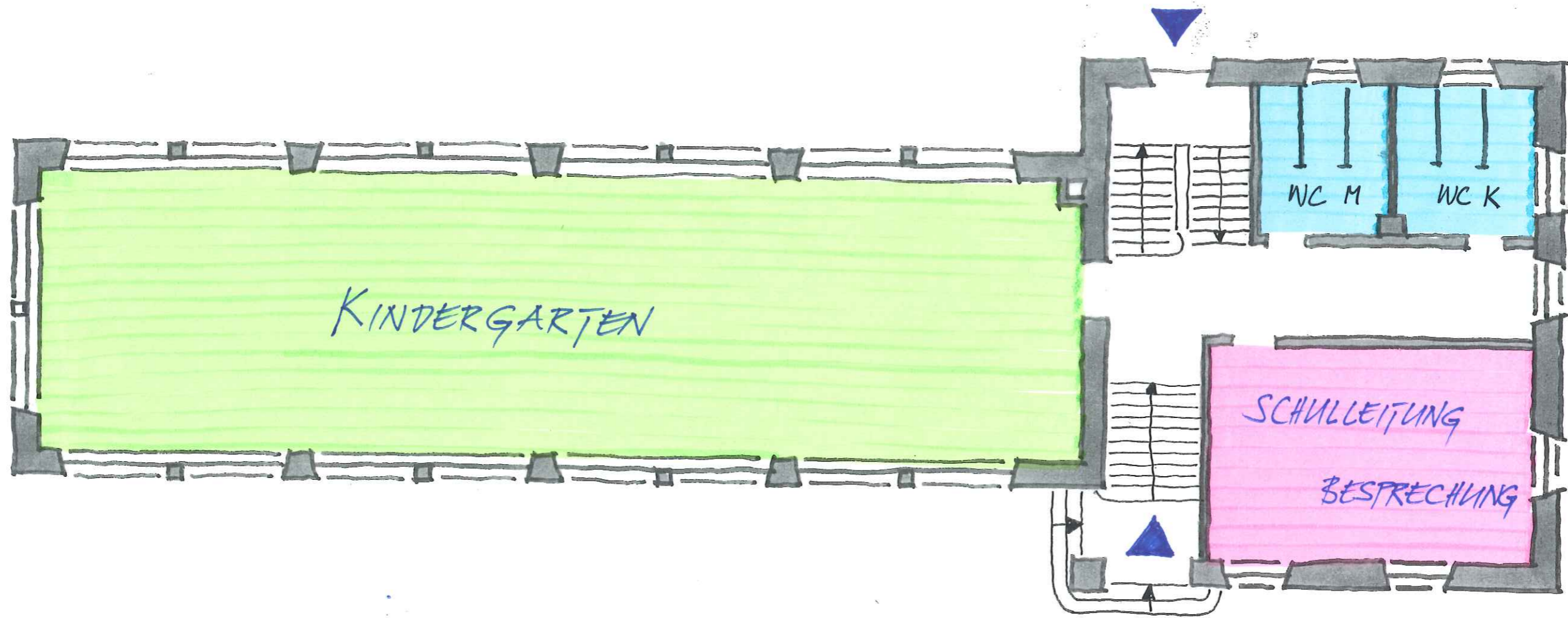
SG



LB, 10/08/09 - SCHULRAT

# RAUMKONZEPT SCHULHAUS / REVUE THOMMEN

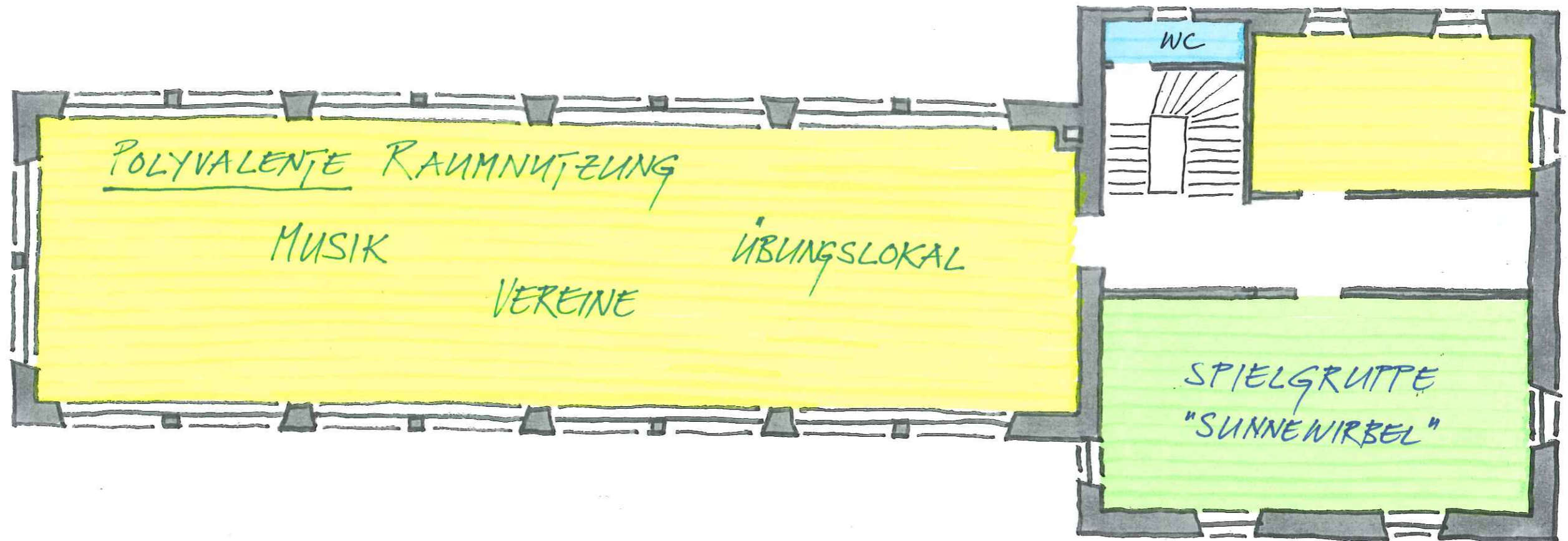
EG



L3, 10/08/09 - SCHULRAT

# RAUMKONZEPT SCHULHAUS / REVUE THOMMEN

09



LB, 10/08/09 - SCHULRAT